



SILENT KNIGHT[®] SOUND-ATTENUATED CANOPY



We introduce the industry's first fully modular, drop-on sound-attenuated canopy specifically designed for low noise and emergency pumping applications

Our sound-attenuated pumps with the *Silent Knight*[®] noise-reducing canopy are designed for operation at low noise levels. *Silent Knight*[®] units are perfect for projects near hospitals, schools and residential areas, or for emergency nighttime pumping. With sound levels of 70 decibels and below, They are quieter than competitive pumps on the market and cost less to operate. *Silent Knight*[®] pumps are tested under the most demanding methods to ensure low-noise job site performance.



- Heavy duty lifting bail
- Silenced intake and exhaust vents
- Silent Knight*[®] sound-reduction canopy with modular panels
- Lockable access doors
- Various engine options available
- Heavy duty frame with integral fuel tank for 24 hour operation



Skid or trailer versions available

Model shown 6TSC-DJDST

SILENT KNIGHT[®] FEATURES

All the standard features and more...

- Low noise level – at or below 70 dBA at 7 meters
- Ruggedly constructed, fully weatherproof, lockable enclosure covers the complete pump unit
- Drop-over canopy style allows enclosure to be added or removed in the field
- Easy-to-assemble, modular design – common panels allow for adaptation to a variety of pump units
- Four side doors, two rear doors and one front door permit access without having to remove suction or discharge hoses
- Available in wet prime and dry prime - suitable for bypasses and other applications
- Safety shutdown control panel standard
- Various diesel engine options
- Simple low-cost maintenance

APPLICATIONS

All the standard applications and more...

- Civil Engineering:** Low-noise requirements such as pumping in residential and hospital zones; emergency applications, sewage pumping; flood drainage; fire fighting; recovery of hazardous liquids
- Construction:** Dewatering excavations, canals and sumps; bypassing sewers and bodies of water; ground water dewatering; wellpoint systems, water supply from wells or canals; hosing down concrete castings
- Waste Treatment:** Sewer bypasses; pumping polluted hot or corrosive waste water containing sand, mud or solids in suspension; dosing neutralizing liquids; pumping out sludge
- Industrial:** Transfer of neutral, acid or alkali clean or dirty liquids containing sand, mud or solids in suspension; low viscosity petroleum products

Note: Alternate pump end materials available for corrosive liquids

In the interest of product improvement, we reserve the right to change specifications without incurring any obligation for equipment previously or subsequently sold. Capacity and Head are shown for comparative purposes. Consult engineering data for exact capabilities.

Coquitlam, BC, Tel.: (604) 941-6664 • Calgary, AB, Tel.: (403) 279-8371 • Edmonton, AB, Tel.: (780) 489-1961 • Saskatoon, SK, Tel.: (306) 933-4849
Winnipeg, MB, Tel.: (204) 235-0050 • Concord, ON, Tel.: (905) 760-7530 • Ottawa, ON, Tel.: (613) 225-9600 • Sudbury, ON, Tel.: (705) 560-2141
Thunder Bay, ON, Tel.: (807) 625-9960 • Pointe-Claire, QC, Tel.: (514) 695-0133 • Beauport, QC, Tel.: (418) 667-1694 • Val d'Or, QC, Tel.: (819) 825-0792
Moncton, NB, Tel.: (506) 857-2244 • Halifax, NS, Tel.: (902) 450-1177 • St. John's, NL, Tel.: (709) 722-6717

www.ittflygt.ca



WORKING PRINCIPLE

Risk criteria for hearing damage have been established by the Occupational Safety and Health Administration. These criteria set maximum allowable exposure times to noise at various levels. The maximum allowable exposure limits range from 8 hours per day at a noise level of 90 dBA to 15 minutes a day at 115 dBA. The noise levels published by NIOSH are for the workplace and are generally higher than would be tolerated in the community. Noise in the community can have other adverse effects including interfering with conversation or work, interfering with sleep or causing general annoyance. Various localities have different sensitivities to noise. Facilities such as schools, hospitals or wildlife sanctuaries could be very sensitive to noise while some residential communities, restaurants and offices could be moderately sensitive. An acceptable noise level that has been widely adopted by many communities is 76dBA.

Our goal is to produce pumps of the highest quality and lowest sound levels in the industry. Each pump is factory tested for noise measurement according to the guidelines set forth by the Hydraulic Institute. With measured sound levels at or below 70dBA @ 23 feet, Silent Knights will be seen but rarely heard!

SILENT KNIGHT® SPECIAL FEATURES

Large side doors allow easy access to engine and pump

2" thick water and oil resistant noise absorbing panels

Various engine options available



Weather resistant door hardware

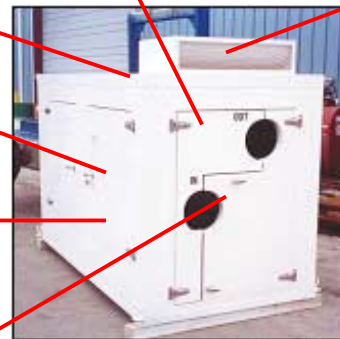
Silenced intake and exhaust vents

Drop over canopy can be added to field units

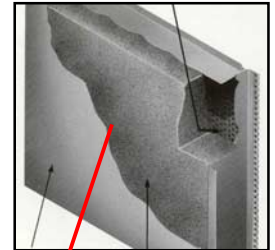
Lockable push latches maintain security

Top, side and bottom panels fully enclose pump and engine

Rear double doors open without disturbing suction and discharge hoses



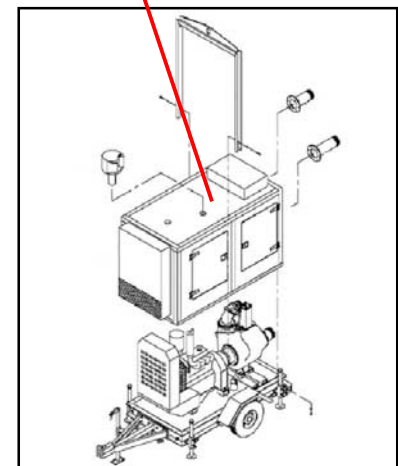
Silent Knight® Canopy with protective base coating.



Panels consist of sandwich construction of outer shell, acoustical insulating fill and perforated metal inner liner



Easy-to-assemble modular design drop over canopy can be added to field pump units



Silent Knight® Drop-On Sound-Attenuated Canopy is available on many different units, with more units being developed. Pictured left is a Sound-Attenuated Rotary Wellpoint Pump.

In the interest of product improvement, we reserve the right to change specifications without incurring any obligation for equipment previously or subsequently sold. Capacity and Head are shown for comparative purposes. Consult engineering data for exact capabilities.

Coquitlam, BC, Tel.: (604) 941-6664 • Calgary, AB, Tel.: (403) 279-8371 • Edmonton, AB, Tel.: (780) 489-1961 • Saskatoon, SK, Tel.: (306) 933-4849
 Winnipeg, MB, Tel.: (204) 235-0050 • Concord, ON, Tel.: (905) 760-7530 • Ottawa, ON, Tel.: (613) 225-9600 • Sudbury, ON, Tel.: (705) 560-2141
 Thunder Bay, ON, Tel.: (807) 625-9960 • Pointe-Claire, QC, Tel.: (514) 695-0133 • Beauport, QC, Tel.: (418) 667-1694 • Val d'Or, QC, Tel.: (819) 825-0792
 Moncton, NB, Tel.: (506) 857-2244 • Halifax, NS, Tel.: (902) 450-1177 • St. John's, NL, Tel.: (709) 722-6717