



ITT

# Newsletter

ITT Water & Wastewater Canada Monitoring and Controls  
Spring 2009

ITT Water & Wastewater is pleased to present you with its Spring 2009 Monitoring & Control Newsletter. This Newsletter contains information about innovations in Monitoring & Control products. Also, you will learn about our APP700 Monitoring & Control Units and MRM01 MAS relay modules.

Should you have comments or suggestions for topics you would like addressed in the future, please contact:

**Luc-Réjean Lépine**  
Manager, Aftermarket & Services  
Luc-Rejean.lepine@itt.com  
514 428-4867

---

## **Flygt APP 700 Monitoring & Control units** *Why compromise?*

The APP 700 series is the successor of the FMC range and is prepared for the future with its new design and generation of system software. The APP 700 series is a complete range of RTUs (Remote Terminal Units) specifically designed for pump stations and developed to meet the demands for powerful and flexible monitoring and control of waste and clean water systems.

By comparison with the FMC you will recognize a reliable and intelligent water and sewer system with high functionality and great communication possibilities. In the new generation you will find some new features such as;

- New user interface with easier navigation and larger display
- Improved language handling
- Built in diagnostic program
- Faster CPU with floating point support
- More memory for application and logged data
- Smaller size front mounting
- 4 serial ports (no PCMCIA)
- WEB Server capability

The open architecture of APP 700 equals an extremely versatile controller with the ability to communicate with the most common SCADA systems, resulting in more effective control of pump station applications.

*continued on next page*



### **In this issue**

Flygt APP 700 Monitoring & Control units.

MRM01 MAS relay modules.

APP700 GSP software.

ITT Water & Wastewater Canada  
Web Site

*Engineered for life*

## Flygt APP700 Monitoring & Control units (continued)

The RTUs are also fully compatible with the AquaCom, Comli and Modbus protocols.

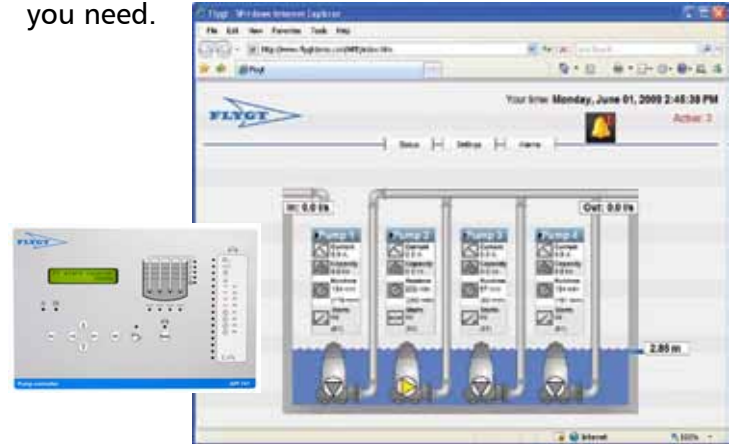
As every SCADA system has its own standard, the APP 700 controllers offers an adaptable time base for monitoring trends, they are adjustable by between one and thirty minutes. There are a total of 180 different variables accessible in the directories and the parameter-controlled standard software handles pump control, alarm function, running data, performance monitoring and communication with SCADA and/or a paging system.

In order to receive the utmost possible flexibility in communication the RTUs can be connected with a number of different modem types, such as for dedicated and dialled up telephone lines. Besides this, there is an interface for RS232 with different communication speeds where external communication equipment can be connected and operated in fixed multi-drop networks, such as radio, and dialled up cellular systems.

To further enhance the functionality and benefits of Flygt APP 700, an integrated web server enables low-cost plant overview. The controller instantly provides

remote access and overview via the web, at the remote station, from the service car or wherever the supervisor may be located, The web server functionality is unique in the business, It marks our constant devotion to innovation within ITT Water & Wastewater

As a leading supplier of fluid-handling solutions, we have the products and expertise to provide you with complete pumping solutions, from planning and delivery, to installation and after-sales service. With a nationwide service network, you can always get the support you need.

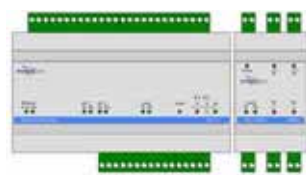


## MRM01 MAS relay modules

### Extends the MAS base unit functionality

The MRM01 relay module extends the MAS base unit functionality. The unit can be controlled by the MAS base unit. A default setup is provided for the CAS spare part application. A number of relay modules can easily be configured using the MAS web tool.

The LEDs on the relay modules make it possible to distinguish between alarm channels and the output relays can be connect to, for example, control panel lamps.



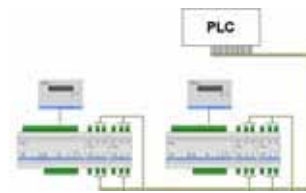
#### Example 1

CAS spare part. A MAS base unit complemented with MRM01 enable separate indication and relay output for each monitoring channel in the same way CAS does.



#### Example 2

A language independent monitoring solution (= not text presentation) for large pumps is obtained by using a MAS base unit and letting two MRM01 modules replace the operator panel.



#### Example 3

Possibility to use a number of MRM01 as an alternative to serial communication (Modbus) between MAS and a PLC. Up to maximum eight relay modules (32 relays) can be setup to transmit alarms. The configuration is easily done by using the MAS web tool.

### ITT W&WW Monitoring and Controls Newsletter

is published by ITT Water & Wastewater Canada  
300, Labrosse Avenue, Pointe Claire, Québec H9R 4V5  
Telephone (514) 695-0100 Fax (514) 697-0602  
wcdn.info@itt.com  
www.ittwww.ca

## APP700 GSP software

### *Flygt's global standard software*

GSP is Flygt's global standard software for control and supervision of wastewater pump stations equipped with APP 7X1-series RTUs.

The software is highly configurable, capable of handling pump control, alarm functions, performance monitoring and running data. It also handles communications, typically to a SCADA (Supervisory Control And Data Acquisition) system, for example AquaView, using either fixed line, dialled line or radio communication; it can also communicate to a paging system.

### GSP programs – Single pump station programs

These are normal programs for an application with one or two pumps and a single sump.

**GSP200:** 2-pump standard software for control and supervision of wastewater pumping station equipped with one or two pumps. Suitable for APP721.

**GSP210:** Same as GSP200 but extended with S45SIOX unit to allow connection of more digital I/Os for optional purposes. 2-Pump standard software for control and supervision of wastewater pumping stations equipped with one or two pumps. Suitable for APP721.

**GSP400:** 4-Pump standard software for control and supervision of wastewater pumping stations equipped with three or four pumps. Suitable for APP741

**GSP410:** Same as GSP400 but extended with a S45 SIOX unit to allow connection of more digital I/Os for optional purposes. 4-Pump standard software for control and supervision of wastewater pumping stations equipped with three or four pumps. Suitable for APP741

**GSP420:** Extended GSP400 program. This software has extra functions for analogue signals. Extended with a S45 and S48 SIOX unit to allow connection of more digital I/Os for optional purposes as well as separate motor current signals. 4 Pump standard software for control and supervision of wastewater pumping stations equipped with three or four pumps. Suitable for APP741.

## ITT Water & Wastewater Canada Web Site [www.ittwwww.ca](http://www.ittwwww.ca)

Our web site is loaded with valuable information for you to use. In the Monitoring & Control section you will find all literature and documentation in regards to:

- Central Systems
- Pump controllers
- Pump sensors
- Level Sensors
- Monitoring relays
- And more...

Make sure you consult the ITT W&WW Canada Web site ([www.ittwwww.ca](http://www.ittwwww.ca)) often for regular updates about the Monitoring & Control products. The same knowledge and experience that builds the best pumps in the world is also capable of controlling and monitoring your pump stations.



**ITT W&WW. The masters of Monitoring & Controls.**