



ITT

Water & Wastewater
Case story | Dewatering

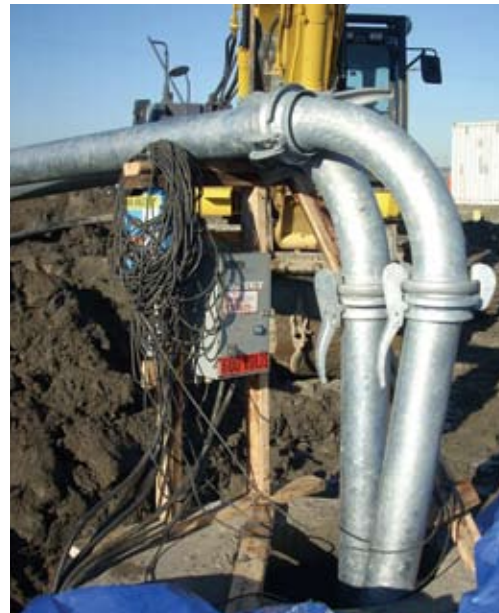
Temporary sewage lift station for Boundary Bay Airport (Delta) created on site with high head pumps, generators and Kwik-Lok system.

As a part of planned municipal improvements, "Boundary Bay Airport" had to build a new sewage lift station. Due to unforeseen circumstances there was delay in building the new sewage lift station. The Airport facility had already expanded and the contractor had not started laying ground for the sewage lift station. Christmas was around the corner and the authorities realized that construction will shut down for Christmas. At this point they contacted ITT Water & Wastewater Canada. After visiting the job-site, Kamal Singh, Dewatering Specialist for ITT Water & Wastewater found that maximum flows are 700 usgpm at 30 feet of head. There is no sewage retention basin or electricity and the system was suppose to run for unattended for 3-4 months.

ITT W&WW proposed pre-fabricated concrete rings / base to create an artificial sewage collection basin. To handle the flow, 2 X 10 HP Flygt 3127 high head pumps with automatic control panel and float switches were proposed. A 35 KW generator with 3,000 litre diesel tank was proposed to run the system for at least one week before being refueled. Kwik-Lok steel piping was proposed because there was no room for sewage spill and it is a system easy to put together with single lever action. It only take few minutes by item with the Kwik-Lok pipes and accessories to build a piping system as flange adaptors, tees, 90 and 45 degrees elbows and 2 pipe lengths are available. The pumps were connected in parallel using check valves to handle low and high flows.

The system was rapidly accepted by the contractor. Crews began to put steel piping together, installing the pumps and connecting the generator.

Once installed the temporary sewage lift station operated flawlessly and at finest levels as forecasted. Within the next 3-4 months the contractor was able to build a new sewage lift station and was highly thankful to ITT W&WW.



Kwik-Lok system.



Flygt 35 KW generator, Bauer piping, check valves and 2 X 3127 X 10 HP pumps in the sump.

Engineered for life

ITT Water & Wastewater Canada Dewatering division

Created to meet the increasing demands for a full fledged solution driven company, the Dewatering division mandate is to engineer, manage and supply major temporary site dewatering and sewage bypass projects in the municipal, construction, industrial and mining sectors. On-site project supervision, technical expertise and equipment maintenance services are also offered.

Built on ITT's 50 years of Canadian water handling experience, the Dewatering division specializes in effective and environmentally secure water and wastewater transfer applications such as Sewage Bypass, Excavation Dewatering, Flood Drainage, Surface Irrigation and Mining Dewatering.

ITT W&WW Canada also offers a full service rentals program. A complete line of submersible pumps, engine-driven suction pumps, generators, piping and complementary accessories are available for either long or short-term rental. With 14 coast to coast service locations, ITT W&WW Canada is the only nation-wide company to offer complete turn-key water handling solutions, expertise and products.

Kamal Singh, ITT Water & Wastewater, Dewatering Specialist,
Vancouver at (604) 941-6664

